

# **ADS1802**

# **User manual**

Dear user,  
Thank you for purchasing ADS1802 (TOYOTA Scan Tool). This manual (PC version) contains usage and after service, please read it carefully before using.

## CONTENT

I. Member Registration .....	01
II. Software Installation .....	03
III. Software Registration .....	08
IV. Software Upgrade .....	14
V. F.A.Q .....	17
[ After Service ] .....	23

### I. Member Registration

**Steps 1:** Open IE Explorer and visit: <http://english.adsscan.com>



Figure-01

**Steps 2:** If you do not register, please register first. Click the "register" button (Figure-02), then it will enter the registration interface (Figure-03).

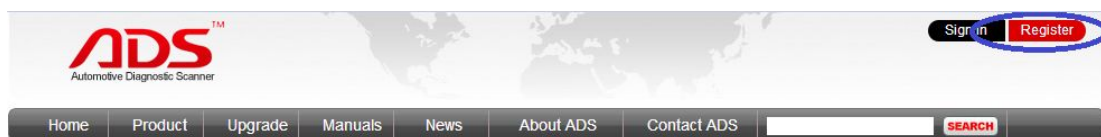


Figure-02

**New Guests**

If you don't have an account with ADS TECH, please create one.

\*Your Name:

\*Email Address:


\* Password:

\* Confilm Password:

\* Tel/Mobile:

Which one describe you the best?

Company Name:

Enter The Code :  




Figure-03

**Steps 4:** Input info. all above and click "Register" button.



Figure-04

**Steps 5:** Now finish registration, pls login with "Username" and "Password" previously registered (Figure-05).


**Returning Guests**

If you have an account, please login with your ADS ID and password.

**Email Address:**

**Password:**

**Forget Your Password?**

Enter The Code :  


 **Login**

Figure-05

## II. Software Installation

**Note:**

Before install the software, pls connect the USB cable between the PC and device and ensure the power indicator light light up.

**Steps 1:** Copy the content of CD to the desktop, then double click “set up”:

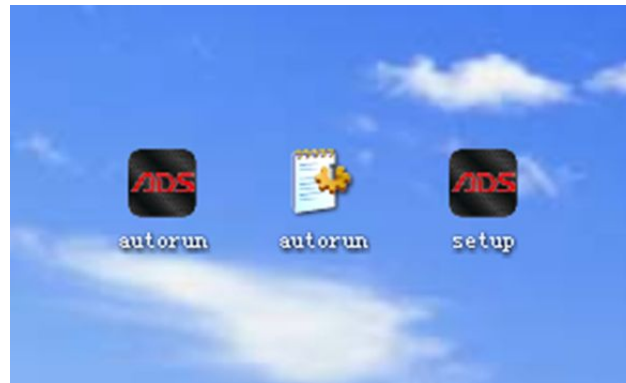


Figure-06



Figure-07

**Steps 2:** Click “Next” button again as Figure-08:

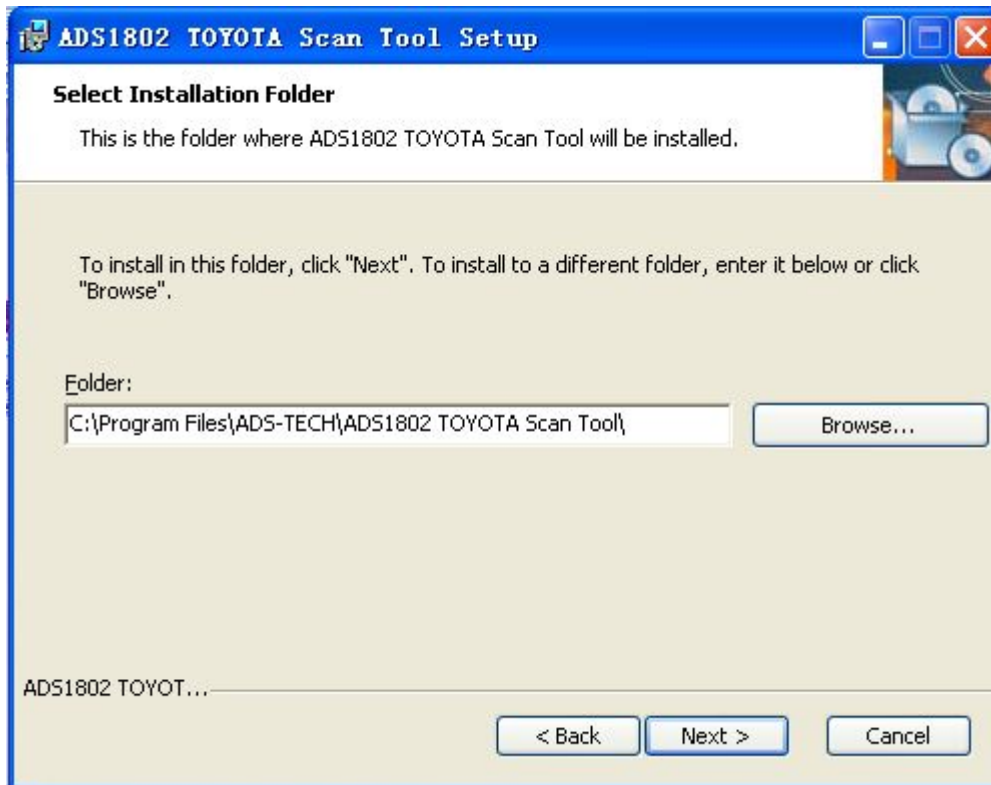


Figure-08

**Steps 3:** Click “Install” button as Figure-09:

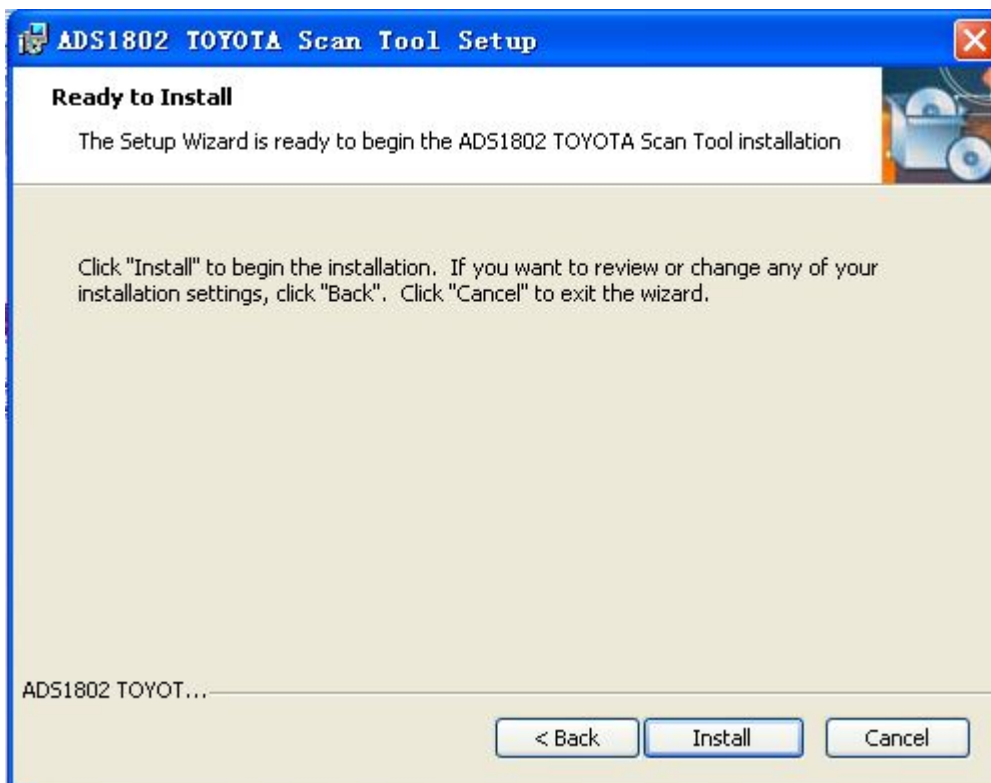


Figure-09

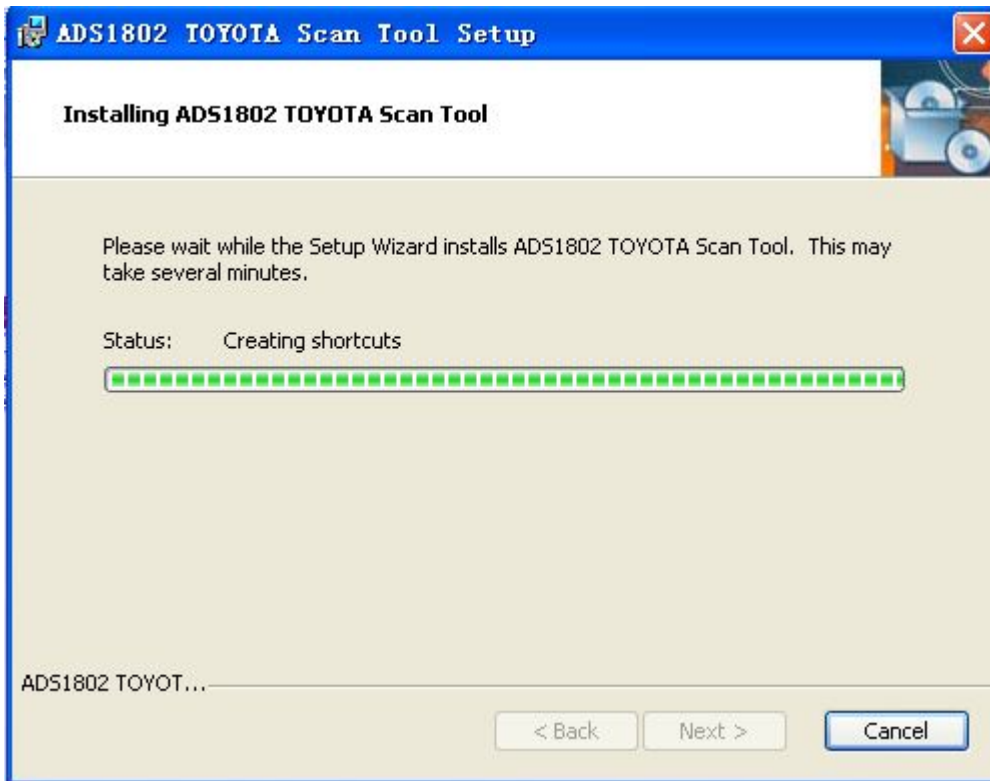


Figure-10

**Steps 4:** It will required to install the USB driver as Figure-11:

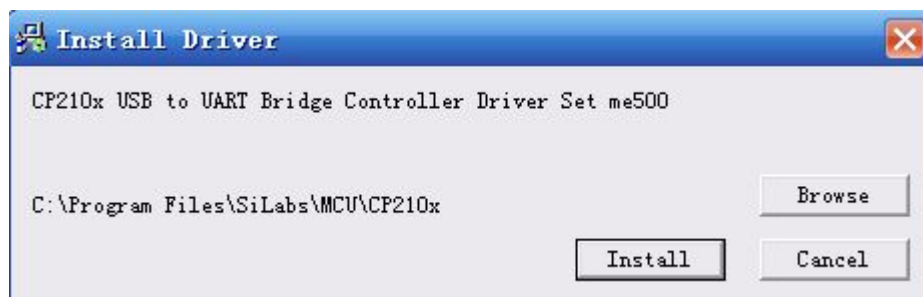


Figure-11

**Steps 5:** Click "OK" button after USB driver installation as Figure-12:



Figure-12

**Steps 6:** Click “Finish” button as Figure-13:



Figure-13

**Steps 7:** Software installation successful, it will display two icons in the desktop:

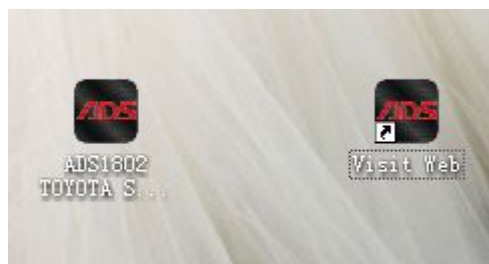




Figure-14

**Note:**

- 1) If your PC has installed the firewall or anti-virus software, it will prevent the diagnostic software running. Pls uninstall and try it again.
- 2) If your PC doesn't work with CD, pls go to our website and click the "Upgrade" interface to download the software.

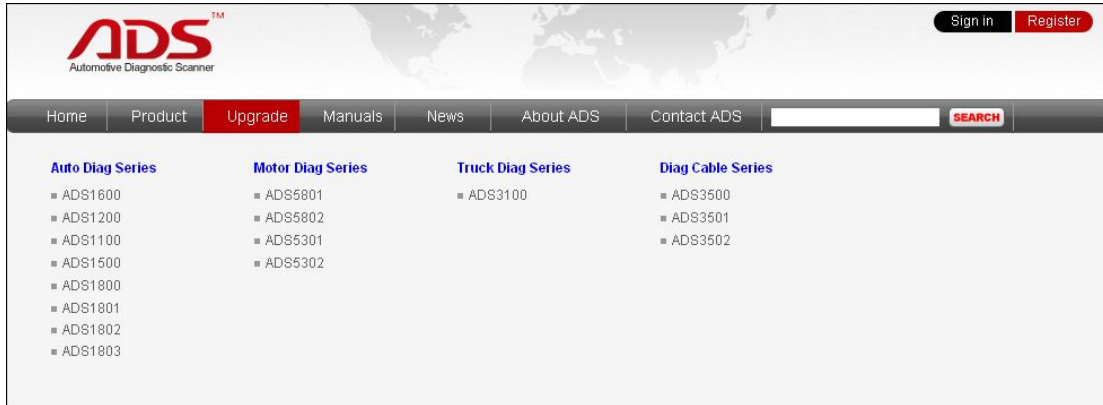


Figure-15

### III. Software Registration

**Note:**

If it is the first time you start TOYOTA Scan Tool Software diagnostic system, it needs to be registered, or can't scan. Before register user, pls connect the PC and USB cable with 12V power supply and available Internet.

**Steps 1:** Double click and start "ADS1802 TOYOTA Scan Tool" on the desktop as Figure-16:

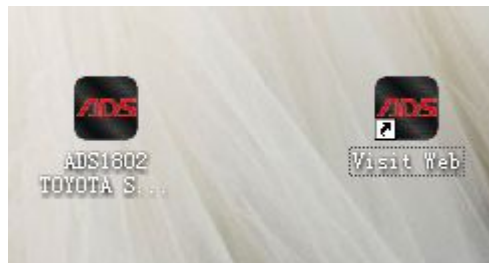


Figure-16

**Steps 2:** Click "REGIST" button as Figure-17:



Figure-17

**Steps 3:** Click “OK” button as Figure-18, it will display interface as Figure-19:

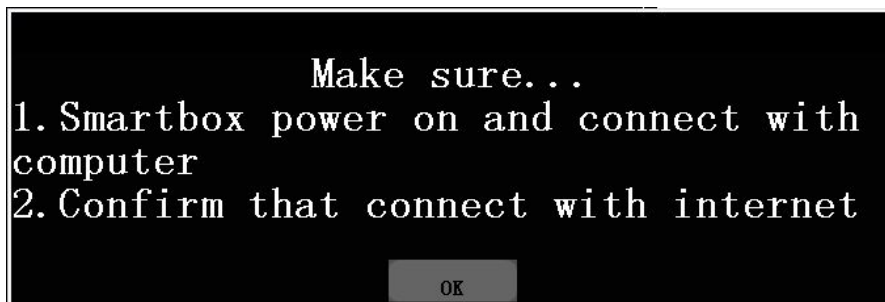


Figure-18

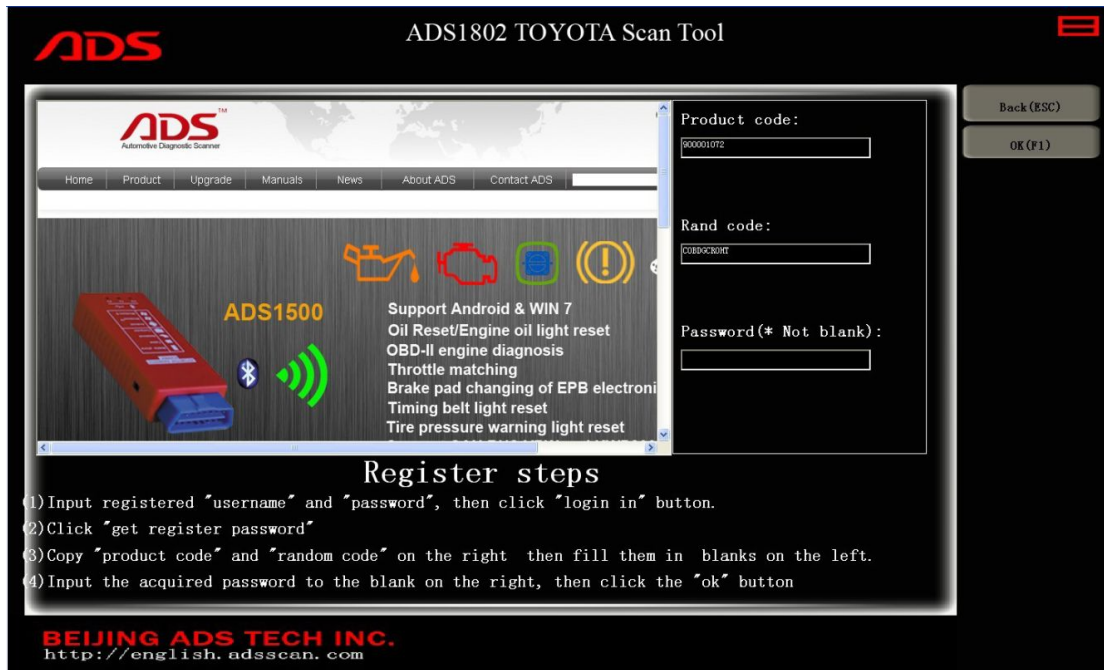


Figure-19

**Steps 4:** Turn to website and sign in your registered account:

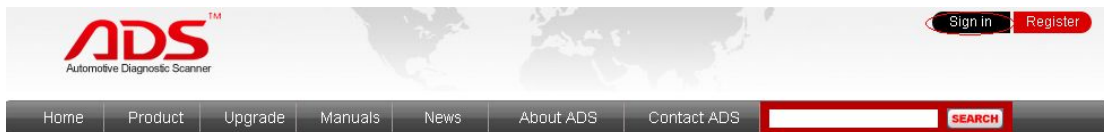


Figure-20

**Returning Guests**


---

If you have an account, please login with your ADS ID and password.

Email Address:

Password:

**Forget Your Password?**

Enter The Code :  


 Login

Figure-21



Figure-22

**Steps 5:** Enter "Get Registration Code" from background interface:

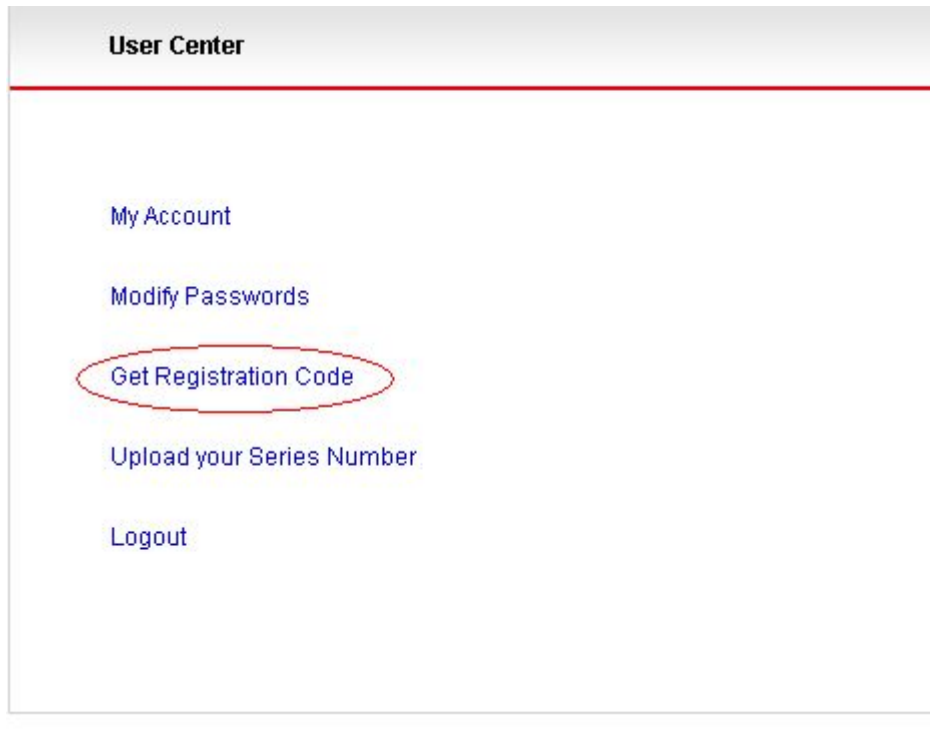


Figure-23

**Steps 6:** Put the Product Code and Rand Code into the forms and click "Register" button to get the Password.

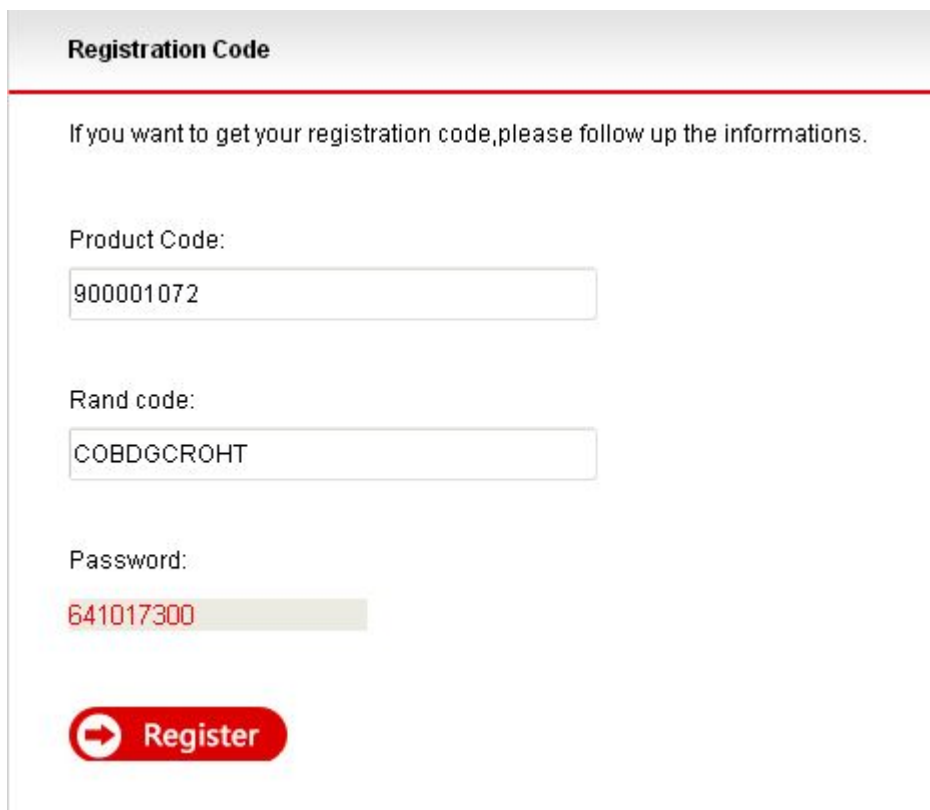


Figure-24

**Steps 7:** Put the Password into the software and click “OK” button.

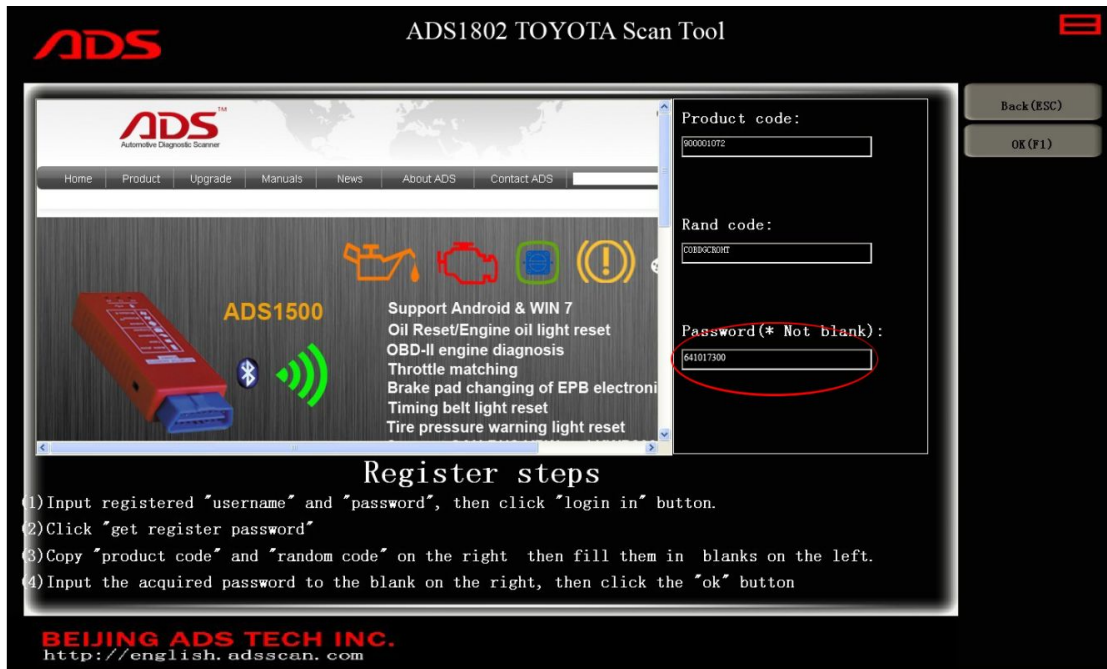


Figure-25

**Steps 8:** Click “OK” button as Figure-26:



Figure-26

**Steps 9:** Register successfully, it will automatically restart as Figure-27:

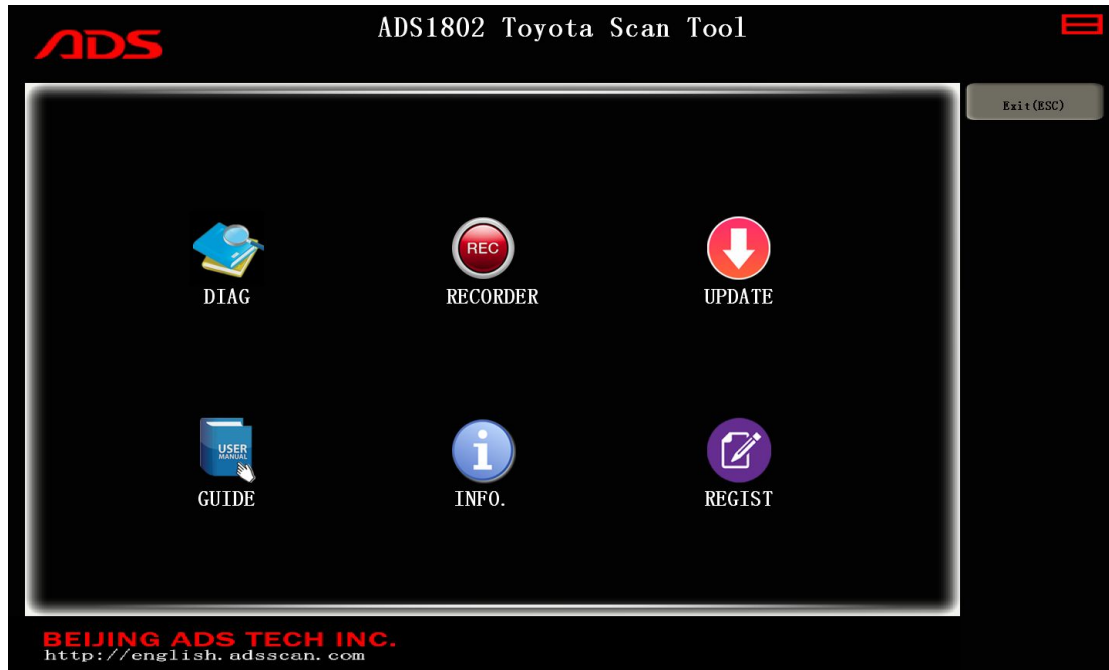


Figure-27

#### IV. Software Upgrade

**Steps 1:** Double click ADS1802 TOYOTA Scan Tool from the desktop as Figure-28:



Figure-28

**Steps 2:** Click “UPDATE” button as Figure-29:

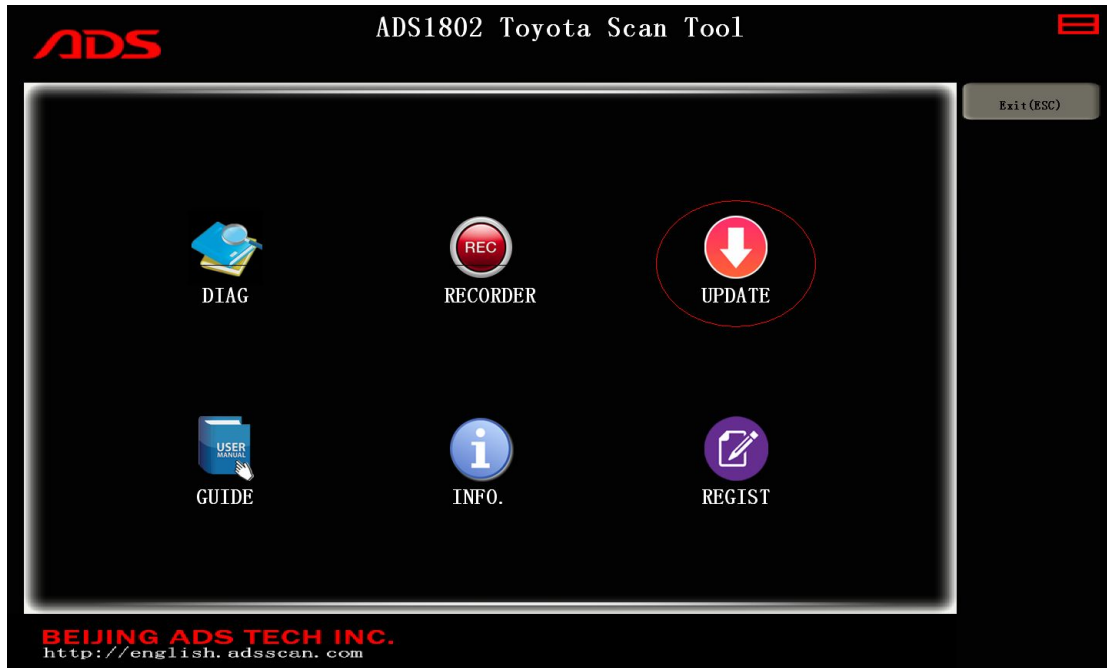


Figure-29

**Steps 3:** Click “OK” button as Figure-30, and wait for check:

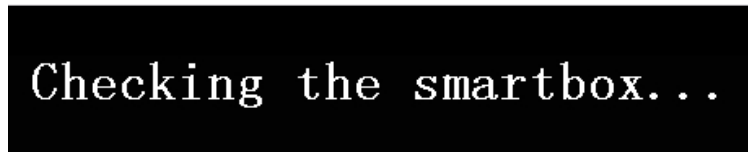


Figure-30

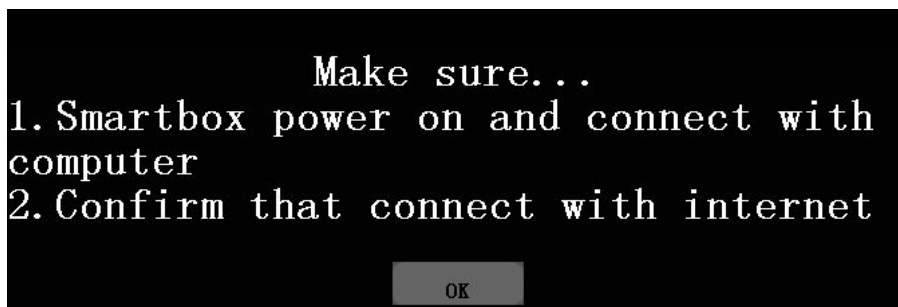


Figure-31

**Steps 4:** Put the Password and click “OK” button as Figure-32:



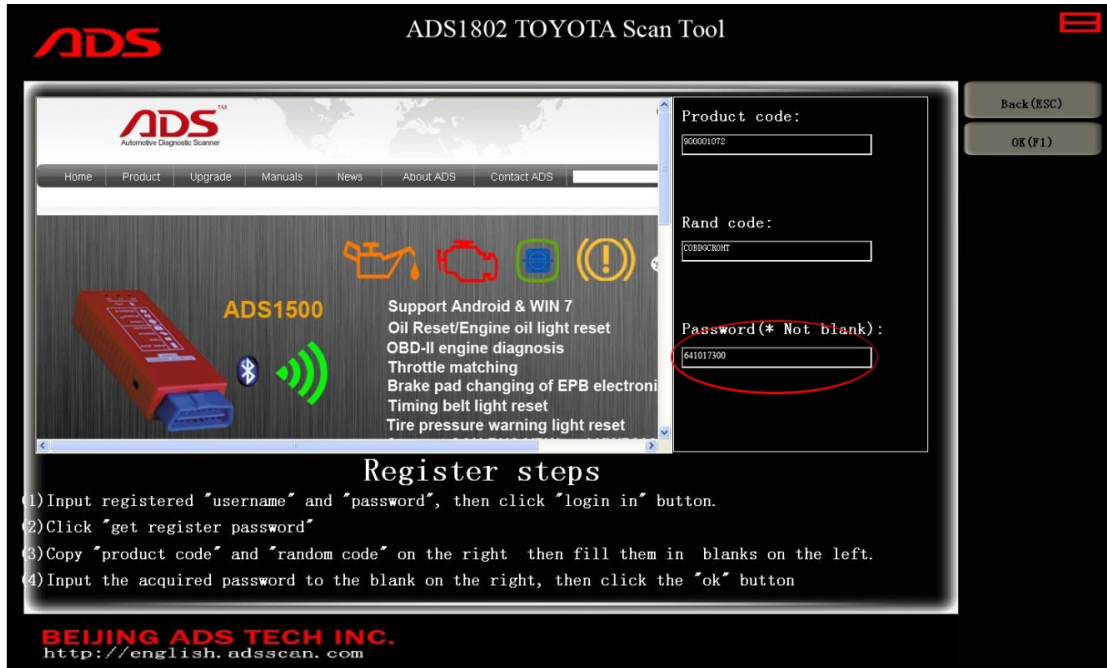


Figure-32

**Steps 5:** Click “CarUp” button and after finish, it will auto-logout and restart.

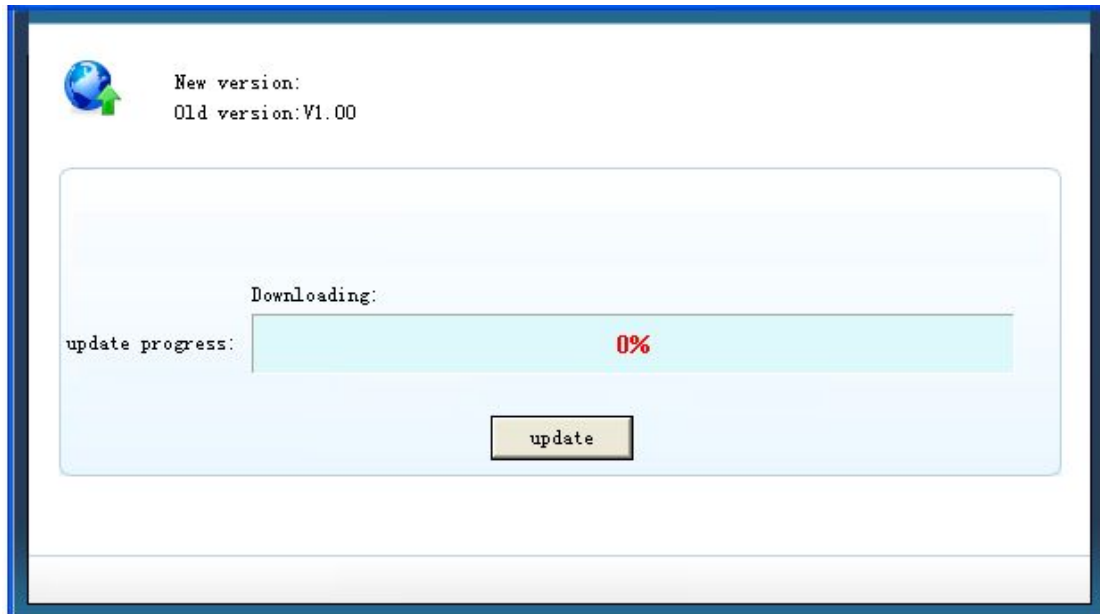


Figure-33

**Note:** If it is the latest version, it will notice as follows:

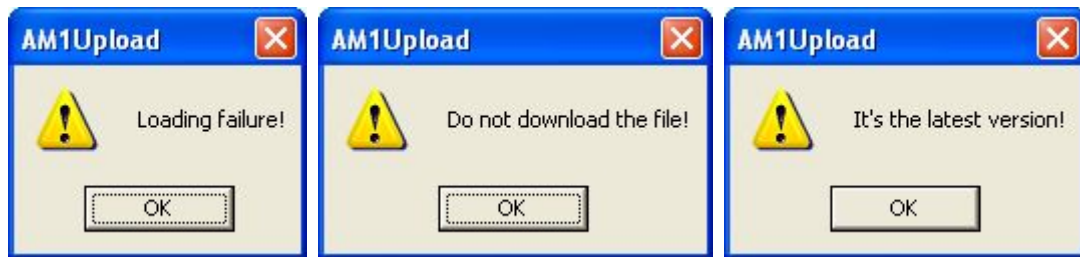


Figure-34

**V. F.A.Q.**

1. If it displays as Figure-36 and still display after reoperate:

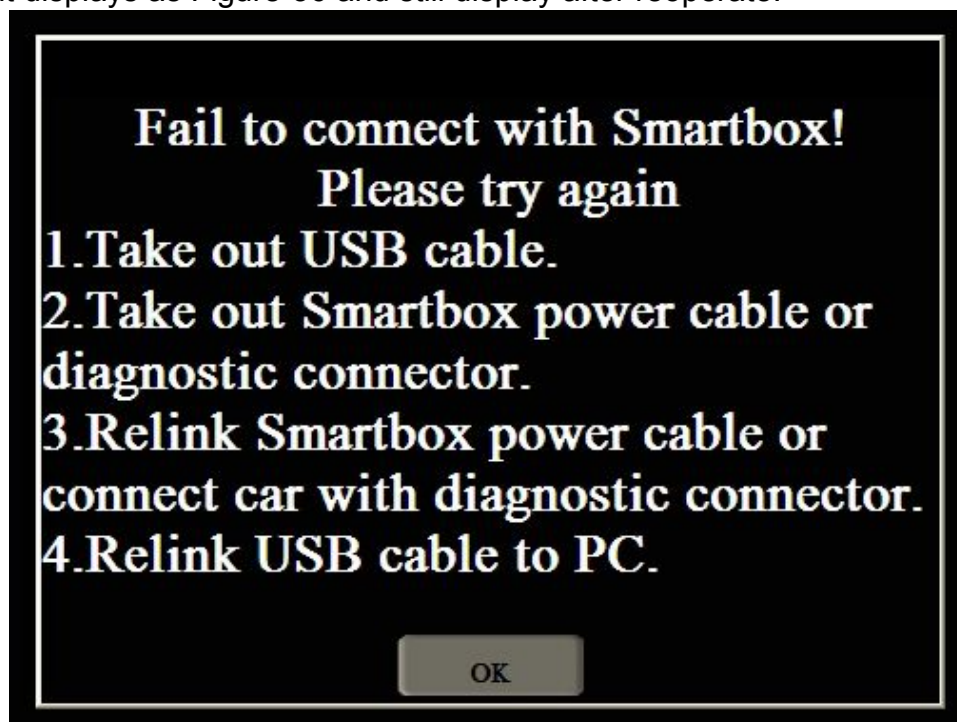


Figure-35

**Possible problems:**

- 1) Check the USB cable connection is reliable between the PC and device.
- 2) Check the USB driver software installation is correct.
- 3) Check the power indicator light of device if lit up.

2. If the USB driver install successfully, it will display in Computer Management as Figure-37:

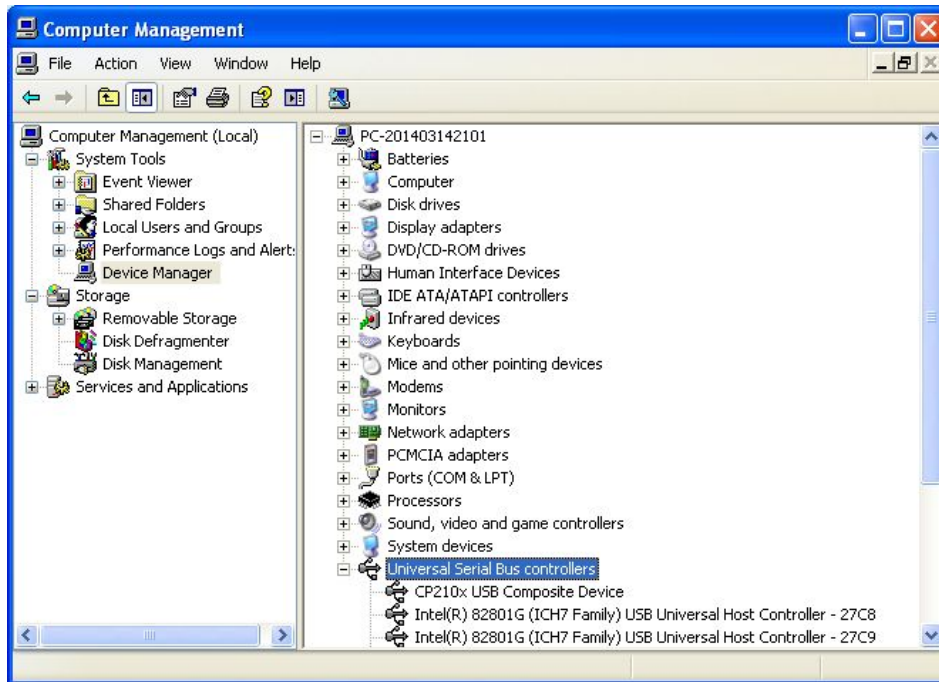


Figure-36

3. Manually install USB driver:

**Steps 1:** Right click “My Computer” and click “Properties” as Figure-38:



Figure-37

**Steps 2:** Click “Hardware” button as Figure-38:

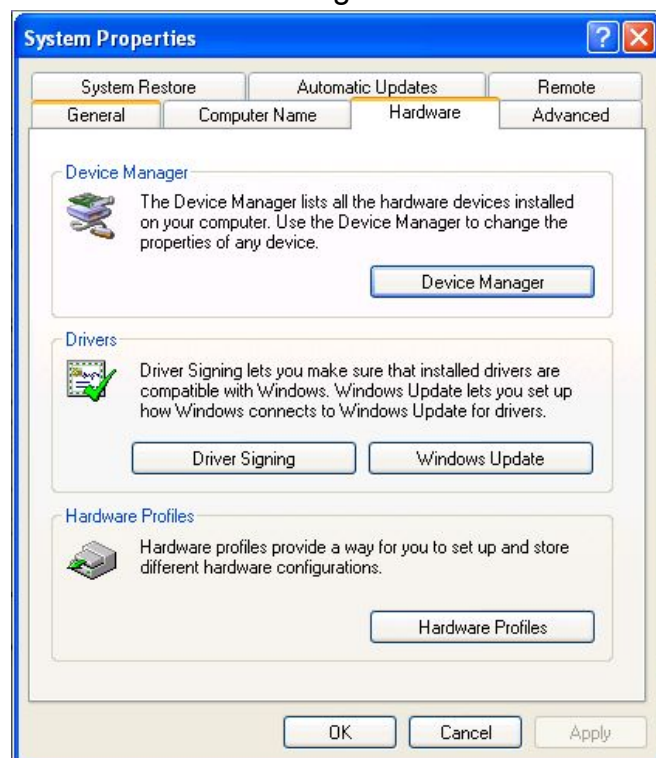


Figure-38

**Steps 3:** Click “Device Manager” button and it will display as Figure-39:

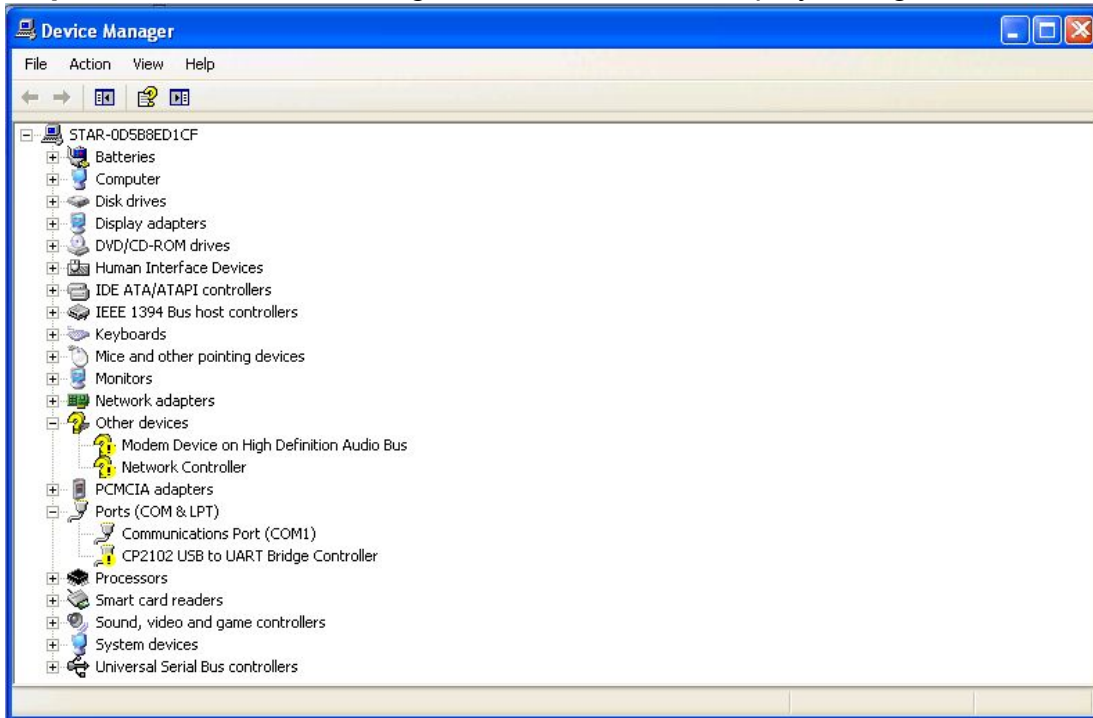


Figure-39

**Steps 4:** Double click the blue dash area and select “Update Driver...”:



Figure-40

**Steps 5:** Click “Next” button as Figure-41:



Figure-41

**Steps 6:** Click “Next” button as Figure-42:

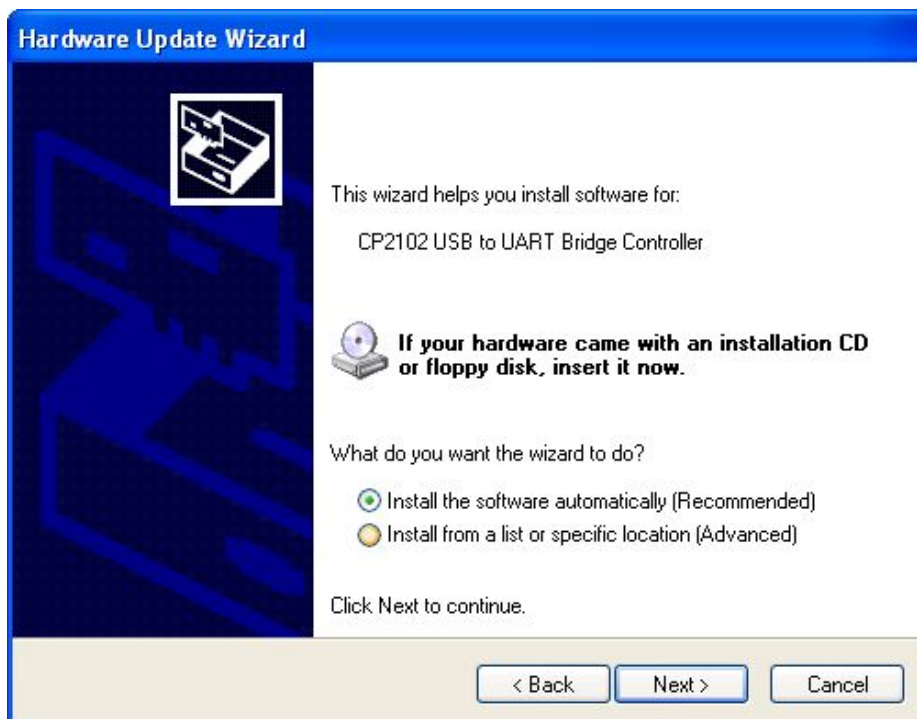


Figure-42

**Steps 7:** Then wait for wizard search as Figure-43:

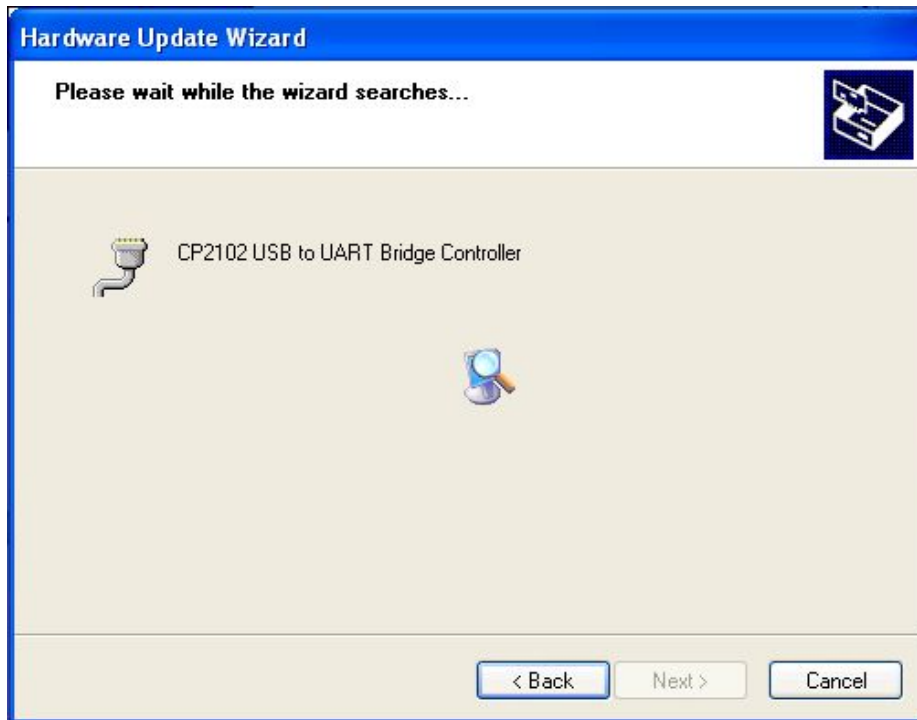


Figure-43

**Steps 8:** If it display as Figure-44, pls click “Continue Anyway”:



Figure-44

**Steps 9:** Click “Finish” button and USB driver will display as Figure-45:

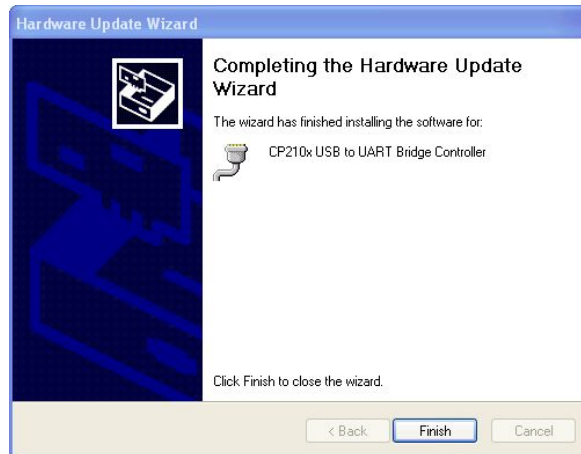


Figure-45

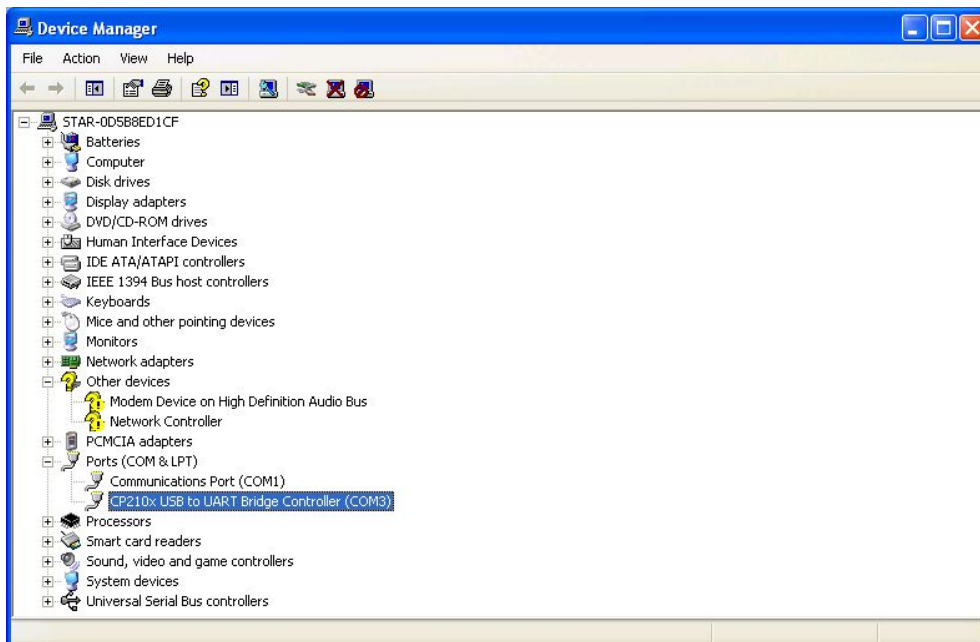


Figure-46



**[ After Service ]**

- Warranty: Within one year.
- URL: <http://english.adsscan.com>
- Tel/Fax: +86-755-89368397
- E-mail: [sales@adsscan.com](mailto:sales@adsscan.com)